



Castro Valley, CA 94546  
www.cvskiclub.org

# CVSC SkiZette

March, 2011



## EVENTS CALENDAR

(f) = flyer in this issue

### Inside this issue:

|   |              |
|---|--------------|
| Company Store/<br>Election of Directors | 2            |
| President's Messg/<br>Racing News       | 3            |
| Industry Liaison                        | 4            |
| Travel Update                           | 5-6          |
| End of Season Ban-<br>quet              | 7            |
| Sun Valley Ski<br>Week                  | 8            |
| Disabled Sports<br>Ability Bash         | 9-10         |
| Safety Tips—<br>Driving in Snow         | 11           |
| Rafting Trip flyer                      | 12           |
| CVSC Ski trip<br>Snowmass, CO           | 13           |
| Avid Skiers in Con-<br>trol             | Back<br>page |

### MARCH\*

- 3/2 CVSC general meeting at Don Jose's
- 3/9 CVSC board meeting at Dennie's
- 3/10-15 BAC Park City, UT Ski Trip (f)
- 3/16 CVSC general meeting at Don Jose's

### APRIL\*

- 4/6 CVSC general meeting at Don Jose's
- 4/13 CVSC board meeting at Dave's
- 4/20 CVSC general meeting at Don Jose's
- 4/29-  
5/13 13 day Danube River Cruise (f)

### MAY

- 5/11 CVSC board meeting (during Danube River Cruise)
- 5/18 CVSC general meeting at Don Jose's

\*March-April OLRC races & clinics (see flyer)

### UPCOMING

- 8/19 Volunteer Party
- 10/1/-11/1 South Africa Highlights & Safari (f)
- 2012:
- 1/21-28 CVSC Snowmass, CO Ski trip (f)
- November Australia & New Zealand trip (non-skiing) (f)

## BAC/FWSA TRIPS

Please visit websites for detailed information.

BAC Web site: [skibac.org](http://skibac.org)

Far West Ski Assoc: [fwsa.org](http://fwsa.org)



Visit our Website at [www.cvskiclub.org](http://www.cvskiclub.org)

## The Company Store

The following Castro Valley Ski Club promotional items, with logo, are available to members :

Black Ball Caps \$10  
Gold Key Rings \$5  
Logo Luggage Tags \$1.50; 4/\$5  
Logo Fanny Packs \$20  
Club Patches \$1  
Club ski pole flags \$5

**SEE DEAN OR JOLENE MICHAEL TO PURCHASE ANY OF THESE GREAT ITEMS**  
510-632-9353; deanfromoak@sbcglobal.net  
or jolenemichael@yahoo.com

## SkiZette Policy NEWSLETTER

**DEADLINE: last week of the month**  
Articles submitted by this date will be included in the following month's newsletter - space permitting.

Submit articles to:

Dennie Warren, Editor  
email: dennieluuu1@att.net



*Didn't get your newsletter? - Change of Address? -  
PLEASE Contact Dave Silva, VP Membership  
email: silvadave@yahoo.com*

# Elections of Directors

## — Call for volunteers —

The annual election for the Board of Directors of the Castro Valley Ski Club will take place at the General Membership meeting in April 2011. This is an important event, so mark your calendars and watch the newsletter for more information.

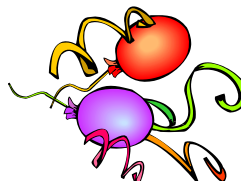
Have you ever thought of helping out the club as one of the leaders? How about as an assistant? Do you have organizational skills? Maybe you have experience from other clubs as an officer or director. Now is a perfect time to contact a current board member and express your interest. We need good people to make the club stronger. It is the volunteers that have made this ski club one of the best in the west. We need you! You can make a difference.

We welcome all comments and questions. The Board is here to serve you, the membership.



### MARCH BIRTHDAYS

|                 |    |                   |    |
|-----------------|----|-------------------|----|
| Ron White       | 1  | Miriam Glickman   | 13 |
| Danny Motola    | 5  | Annemiek Storm    | 18 |
| Kenn Wulff      | 9  | Paula Kinahon     | 20 |
| Maureen Motola  | 9  | Jeanne Burke      | 28 |
| Dick Ableser    | 11 | Dennis Sorensen   | 30 |
| R. Dean Michael | 12 | Stephanie Lincoln | 30 |
| Young Kang      | 12 |                   |    |



## President's Message

Hello Members,

I hope everyone is out there enjoying this latest big delivery of the wonderful white stuff. All areas in the Sierras are reporting great conditions with lots of powder. Conditions haven't been this good in awhile.

While skiing can seem like a pretty expensive endeavor, we have been finding that there are many deals out there on lift tickets, lodging and equipment that it makes it attractive and affordable to ski right now. Check out [www.onthesnow.com](http://www.onthesnow.com) for deals all over the west for all types of areas. A trio of other good sites are [www.snowbomb.com](http://www.snowbomb.com) - [www.liftopia.com](http://www.liftopia.com) - [www.mountaingetaway.com](http://www.mountaingetaway.com). Many of the deals are for discounted lift tickets with lunch voucher included and there are many offers of discounted lodging and lift tickets included. A good site to find one-day bus trips is [www.slidingonthecheap.com](http://www.slidingonthecheap.com). And don't forget about the condo in Tahoe City that the Club has access to at very reasonable rates - just give Jim Silva a call or send him an email to find out more about it or to book the condo. You will find Jim's contact information on the back page of this newsletter.



Karen Wehrman  
President

Well, we have another couple of months to enjoy our favorite activity, but eventually the end of the season will be here. So, I hope you all will sign up for the **End-of-Season Banquet** that Pat Green has been busy planning - there will be good food, great company, and lots of dancing to celebrate the great season we have had this year. You will find a form to sign up in this newsletter.

Our Club has, for many years, been an ardent supporter of Disabled Sports USA, and this year the **Ability Challenge race and Wounded Warrior Bash** are on March 25 and 26, at Alpine Meadows. The **Ski-for-All** is on March 19 at Sugar Bowl. For more information on either of these great events go to [www.dsusafw.org](http://www.dsusafw.org). These are two fantastic ways to support DSUSA and are lots of fun, to boot. If any of you are interested in being on the Ability Challenge race team, please contact me for more information. And be aware that the Club will pay half of your entry fee to enter the race.

So much skiing, so little time - oh my!!

Hope to see you all at a meeting, at a great Club event or on the slopes. It seems that all the "thinking snow" that we've been doing has paid off!!

Karen



### Racing News from Dave Cunningham

Open League has hosted 5 races so far this season with 2 more left to go. Here is how our Castro Valley team has fared so far:

Brian Taylor, S02OM – Brian has had a great season so far. He bumped up from S03OM to S02OM in his first race this season. Since then he has had 3 1<sup>st</sup> place finishes and has a good chance to take first place overall in S02OM. Way to go Brian!

Stefanie Lincoln, S04JW – Stefanie had a 1<sup>st</sup> place finish her first race. She injured her knee though and has not raced the past four races. Her rehab is going well though and she will be back racing soon.

David Cunningham, S05OM – I had 2 1<sup>st</sup> place finishes the first weekend. Since then I had a crash and a 2<sup>nd</sup> place finish.

Norm Glickman, S06OM – Norm has a 3<sup>rd</sup> and a 5<sup>th</sup> place finish.

Steve White, S07OM – Steve has had 3 1<sup>st</sup> place finishes, a 2<sup>nd</sup> place and a 3<sup>rd</sup> place. He has a good chance to take 1<sup>st</sup> overall in S07OM.

Ron White, S07VM – Ron has had a 3<sup>rd</sup>, a 4<sup>th</sup> and 2 5<sup>th</sup> place finishes so far.

Sandy Kiyomura, S09OW – Sandy has 3 1<sup>st</sup>'s and a 2<sup>nd</sup> place finish. Sandy also has a good chance to get first place overall in her class.

Our racers have been doing quite well this season. Our Club is in 6<sup>th</sup> place overall and 4<sup>th</sup> place in points per racer start. We have 2 more races this weekend. After that it will be time for our NorCal championships at Sugar Bowl followed by the Far West Finals at Alpine Meadows.



Dave Cunningham  
Industry Liaison

**Industry Liaison** David Cunningham – industry@skibac.org

Mother Nature has been really sending us some storms. Five more feet of snow fell last weekend. There are more storms on the horizon as well. Conditions are great so get up there and enjoy the powder. Check out what's going on at our Sierra resorts.

**\*Alpine Meadows:** [www.skialpine.com](http://www.skialpine.com).

Alpine Meadows is open. Alpine has 18' of base and more snow is on the way. They have received over 530" so far this year. Alpine is celebrating their 50<sup>th</sup> anniversary on Jan 8<sup>th</sup>. Come join the fun. Join the new Alpine Club program to save on lift tickets. \$20 to sign up and it saves you \$10 on each ticket that you buy online more than 24hrs in advance of your ski day. Check out their website for more info.

**\*Bear Valley:** [www.bearvalley.com](http://www.bearvalley.com).

Bear Valley is open. They have over 11' of base and more snow is on the way. Bear is hosting the California Senior Winter Games, March 11-13th. Be sure to check out Bear's website for up to date info.

**\*Boreal:** [www.rideboreal.com](http://www.rideboreal.com).

Boreal is open. They have 9-15 feet of base. Boreal offers their "iRide" card. With it you can ski 2 days and get a 3<sup>rd</sup> day free. Boreal has been busy this past summer. They have added even more snowmaking and upgraded their lighting for night skiing. Be sure to check out their web page for the latest information.

**\*Diamond Peak:** [www.diamondpeak.com](http://www.diamondpeak.com).

Diamond Peak is open and has 8-12 feet of base. Diamond Peak is a Kid friendly resort and has lots of packages for kids and parents to save money. They do have their season passes on sale now. Be sure to check out the new and improved base lodge facilities. Diamond Peak will complete Phase 2 of their base renovations this December. They are adding a stairway between the upper and lower parking lots as well as an all-new Ski School and Services building to go along with their new lodge. See their website for details.

**\*Dodge Ridge :** [www.dodgeridge.com](http://www.dodgeridge.com).

Dodge Ridge is 100% open. They have a base of 8-10 feet. They have been making improvements at this resort for the past few seasons. This is a great place to take the family. Discount tickets are available at Save Mart and Lucky's stores. Check their new and improved website for upcoming events.

**\*Donner Ski Ranch:** [www.donnerranch.com](http://www.donnerranch.com).

Donner Ski Ranch is open. They have been making improvements at this resort for the past few seasons. It is a great mountain for beginners and families. Six chairs and 2 moving carpets serve 500 acres. This is a great place to take the family. Check their website for upcoming events.

**\*Heavenly:** [www.skiheavenly.com](http://www.skiheavenly.com).

Heavenly is open. They have 10-20 feet of base. Heavenly has been building a new lodge this year. The Tamarack Lodge at the top of the Gondola will provide indoor dining for up to 500 skiers in a new 15,000 sq ft facility. They will also have patio seating for 250 skiers outside. Be sure to check out their website for details.

**\*Homewood:** [www.skihomewood.com](http://www.skihomewood.com).

Homewood is open. They have 18 feet of base. Homewood has some of the most scenic views of Lake Tahoe. Season Passes are on sale. JMA Ventures purchased the West Shore Café this summer and will be making it part of the Homewood resort. Check out their website for information and also **\*Kirkwood:** [www.kirkwood.com](http://www.kirkwood.com). Kirkwood is open. They have 13-17 feet of base. Kirkwood has had over 512" of snow already. For you iPhone users there is an app that they have developed to place resort info right on your phone. Kirkwood has added a Zip Line Adventure park this year. [www.ziptahoe.com](http://www.ziptahoe.com). Check out their website for details.

**\*Mount Rose:** [www.skirose.com](http://www.skirose.com).

Mt. Rose is 100% open. They have 9-13 feet of base. Mt. Rose has built a new Lodge on the Slide Mtn. side of the resort. This new lodge features great views and a large sun deck that can hold 400 people. Mt. Rose is only 25 minutes from Reno. Check it out on their website.

**\*Mammoth/June Mountain:**

[www.mammothmountain.com](http://www.mammothmountain.com).

Mammoth has 12-18' of base. Mammoth also has a custom iPhone app available to put resort info right at your fingertips. Horizon Air is providing air service into the Mammoth Lakes area. The service is planned to continue till April 24<sup>th</sup>. There will be Flights out of San Francisco and San Jose this season. Mammoth is a year round resort. Check out all the events they have planned: <http://www.mammothevents.com/>

**\*Northstar-at-Tahoe:** [www.skinorthstar.com](http://www.skinorthstar.com).

Northstar is open. They have 10-15 feet of base. Northstar is now part of Vail Resorts. There are lots of events on their calendar. Double Whammy passes good at Northstar and Sierra can now be converted into Vail Resorts Epic Passes. Check out the deals and what's happening on their website.

**\*Sierra-at-Tahoe:** [www.sierraattahoe.com](http://www.sierraattahoe.com).

Sierra is open. They have 7-13 feet of base. Sierra has their season passes for 10-'11 on sale now. You can get a Sierra only season pass starting at \$199. Check out their website for details.

**\*Soda Springs:** [www.skisodasprings.com](http://www.skisodasprings.com).

Soda Springs is open. They have 8-15 feet of base. Soda Springs has been making improvements to their Tubing Hill and to the Planet Kids play area this summer. Check out their website for details.

**\*Squaw Valley USA:** [www.squaw.com](http://www.squaw.com).

Squaw is open and has seen over 30' of snow fall so far this season. They currently have 10-16' of base. Squaw Valley has lots of activities available for skiers and non-skiers. See their new web page for details.

**\*Sugar Bowl:** [www.sugarbowl.com](http://www.sugarbowl.com).

Sugar Bowl is open top to bottom. They have 10-18 feet of base. Check out their season pass deals and events on their website.





The Danube Trip is **SOLD OUT** but send us an e-mail to get on a waiting list. We may have a last minute cancellation or we may be able to secure another cabin. We have over 2/3 of the boat!

## Danube River Cruise - includes Transylvania/Dracula's Castle extension April 29 - May 13<sup>th</sup>, 2011

Vienna to Bucharest - Seven Countries  
Austria, Slovakia, Hungary, Croatia,  
Serbia, Romania & Bulgaria

**We have 58 members signed  
up for this trip.**

Air from either SFO or LAX

**PRICING: \$3990**

includes extension & port charges of \$168



### Who's Going:

Tucker Hoffmann  
Wayne Stolfus  
Karen Wehrman  
Pam Nicholson  
Tom White  
Dan Green  
Norman Prickett  
Anne White  
Dan Moritz  
Ralph Sherman  
Deborah Weller-Walton  
Wayne Ainsworth  
Cherri Gurney  
Deborah Scaloni  
Eva Lanphear  
David Towar  
Marilyn Sunnergren  
Mary Wilburn  
Marleen Schlottman  
Cecil Johnson

Kathy Hoffmann  
John Houseman  
Jim Silva  
Dean Schlax  
Suzanne White  
Steve Tadevich  
Sherry Prickett  
Joe Loader  
Christina Moritz  
Joanna Loveland  
Karen Kimball  
Elizabeth Yagle  
Dick Ableser  
Connie Wolzinger  
Elaine Cobos  
Cathy Simons  
George Constantine  
Karen Lawlor  
Jeannie Van Lew  
Ruth Johnson

Cyndi Hillman  
Pam Quinn-Houseman  
Steve Nicholson  
Dave Silva  
Patricia Green  
Jan Tadevich  
Ron White  
Teddi Hambaroff  
Charlotte Sahnnow  
Terry Walton  
Claudia Fernandes  
Bob Petersman  
Janice Dark  
Lynda Nestlebusch  
Ben Valenquez  
Bill Sunnergren  
Alan Eliason  
Young Kang

*Along The  
Blue Danube*



## SOUTH AFRICA HIGHLIGHTS & SAFARI

Cape Town, Kruger National Park, Swaziland, Zululand, Soweto & Hluhluwe National Park

*also available Victoria Falls 3-night extension*



**October 18 - Nov 1, 2011 (13 days, arrive home on day 14)**

**\$3575 -SOLD OUT**

taxes \$132 main trip or \$195 if you are doing main trip & Victoria Falls, insurance \$139

**Included:**

- Round-trip airfare from LAX or SFO via South African Airways - red eye flight through NY
- Airline fuel surcharge
- Intra-South Africa flight and ground transportation
- Accommodations at superior first class hotels with private bath
- 18 meals: 11 buffet breakfasts, 2 lunches, 5 dinners
- Comprehensive touring and safaris incl. admission fees
- A visit to Robben Island visit where Nelson Mandela was imprisoned
- Experienced, English speaking Tour Director throughout
- includes all tips

**Victoria Falls \$1070** - includes tips to guide & driver & special Boma Farewell Dinner

## SNOWMASS, COLORADO

**January 21-28, 2012 - \$925**

ASPEN SNOWMASS.

Price does NOT include air or ground transportation.

**Only 3 spots left -** 59 signed up so far

We will be staying at the ski in - ski out TOP OF THE VILLAGE condos. Please e-mail or call Pat Green, 925-846-7250, [greenm@comcast.net](mailto:greenm@comcast.net), that you have sent in your deposit. **See flyer**

**2012 - New Zealand & Australia** - SYDNEY, GREAT BARRIER REEF, CAIRNS, MELBOURNE, CHRISTCHURCH, QUEENSTOWN, MILFORD SOUND, AUCKLAND



This will be a sight seeing trip, not a ski trip. We will probably go in November and it will be a 3-week adventure trip. Space for 40. Pricing will be around \$4000. (Already have over 40 on the interest list) More info soon.

Tucker - CVSC Travel Director & Kathy, assistant  
2657 Rivers Bend Circle, Livermore CA 94550  
925-371-1910 [tkhoffmann@comcast.net](mailto:tkhoffmann@comcast.net)

**CVSC CST # 2081040**

# CVSC END OF SEASON BANQUET



**Saturday, April 23, 2010**

Black tie optional

## SEQUOYAH COUNTRY CLUB

4550 Heafey Road, Oakland

**\$37 per person (CVSC Member)**

**\$47 per person (Non-member)**

### EVENING EVENTS

6pm – Hors d'oeuvres/no hose cocktails

In the Terrace Rm

7pm – Dinner in the Sky Rm

Installment of new CVSC Board

Awards for Officers & Members

Door prizes & raffle

Dancing to the music of 'Get Down Productions'

Eston - DJ

to 11:30

### MENU CHOICES

#1 Steak

#2 Salmon

All entrees include salad, seasonal vegetables and chef's choice of potatoes or rice,  
bread & butter, coffee, tea, and dessert.

# DON'T MISS THIS GALA EVENT!!!

### BANQUET RESERVATION FORM

Complete reservation form & mail to Pat Green, 4655 Cope Ct., Pleasanton, CA 94566

By Sunday, April 17, 2011

(Enclose check payable to CVSC)

| Name(s)     | Menu choice # | Member? | Amt enclosed                   |
|-------------|---------------|---------|--------------------------------|
| _____       | _____         | _____   | \$ _____                       |
| _____       | _____         | _____   | \$ _____                       |
| Phone _____ |               |         |                                |
| Email _____ |               |         | Total amount enclosed \$ _____ |



## FWSA SKI WEEK IN SUN VALLEY, ID

**~WHAT A GREAT TIME WE HAD!~**

On January 21<sup>st</sup>, 50 Castro Valley members left for Sun Valley on the FWSA trip. What a great time was had by all, the weather and conditions were good except for the picnic on the mountain which all the food froze before we could eat it.

The BAC dinner was wonderful, thanks to Paula Kinahon [thanks again Paula], it was in the lodge dining room. The food and setting were wonderful.

Next came the Castro Valley party. We had it in two condos across the hall so it worked out great, plenty of food and great friends getting together and enjoying a great time. The Far West party and farewell dinner were great. Nice to see old friends from other areas we have gotten to know.

Looking forward to the Snowmass trip next year.

Thanks again for all your help and support  
Pat Green



Ski week at Sun Valley was....

lots of skiing....

lots of partying....

lots of fun!!!!!!



Photos courtesy of Dave Cunningham





# DISABLED ABILITY SPORTS BASH

Tickets: \$100 / Reserved Tables for 10: \$1000

- ☐ Yes, I plan to attend. Enclosed is \$\_\_\_\_\_ for \_\_\_\_\_ person(s)
- ☐ Reserved Table: \$1000 for 10 people \$\_\_\_\_\_  
(tickets will be held at will call under the table purchasers name.)
- ☐ Sorry, I am unable to attend. Enclosed is a tax deductible donation to support the Snowsports Programs of Disabled Sports.

Name: \_\_\_\_\_

Phone: \_\_\_\_\_

Email: \_\_\_\_\_

(See other side for payment information)

## Payments accepted in the form of check and/or credit card

Please make all checks payable to DSUSA

PO Box 9780 • Truckee, CA 96162

(530) 581.4161

Federal Tax I.D. # 68-0024920

## Credit Card Payment Information

Credit Card # (VISA or MC Only) \_\_\_\_\_

Name on Card \_\_\_\_\_ Exp. \_\_\_\_\_

Credit Card Billing Address: \_\_\_\_\_

City/State/Zip: \_\_\_\_\_

Billing Phone: \_\_\_\_\_ 3 Digit Security Code \_\_\_\_\_

Signature \_\_\_\_\_

**Proceeds Benefit Disabled Sports USA Far West**

The Ability Bash is the culmination of a five-day event highlighting the accomplishments of Disabled Sports USA Far West, our participants, volunteers, and honored guests. The week starts with an Ability Camp for 25 soldiers and marines disabled in Iraq and Afghanistan who will receive specialized instruction in adapted snow skiing and snowboarding as part of their therapy and reintegration into the community.

---

**Saturday, March 26th, 2011**  
**6:30 pm to 10:30 pm**  
**The Lodge at Alpine Meadows**

Social Hour with drinks and appetizers 6:30 to 7:30 PM  
Gourmet Plated Dinner served at 7:30 PM  
Featuring the Big Band Sounds of On-Air  
Wine, Microbrews, Silent Auction and Raffle Throughout the Night

Tickets are \$100  
Reserved tables for 10: \$1000  
For Tickets Call: 530-581-4161, visit us online: [www.disabledsports.net](http://www.disabledsports.net)  
or mail back the enclosed reply card.  
Must be 21 or older to attend.

# Driving on Snow and Ice: Safety Tips

by Mac Demere, Contributor

The best tip for winter driving: Sometimes it's best to stay home, or at least remain where you are until snow plows and sanding crews have done their work.

1. **Get a grip.** To have adequate snow traction, a tire requires at least 6/32-inch deep tread, according to The Tire Rack. (New passenger-car tires usually have 10/32-inch of tread.) Ultrahigh-performance "summer" tires have little or no grip in snow. Even "all-season" tires don't necessarily have great snow traction: Some do, some don't.
2. **Make sure you can see.** Replace windshield wiper blades. Clean the inside of your windows thoroughly. Apply a water-shedding material (such as Rain-X) to the outside of all windows, including the mirrors. Make sure your windshield washer system works and is full of an anti-icing fluid. Drain older fluid by running the washers until new fluid appears: Switching fluid colors makes this easy.
3. **Run the air-conditioner.** In order to remove condensation and frost from the interior of windows, engage your air-conditioner and select the fresh air option: It's fine to set the temperature on "hot." Many cars automatically do this when you choose the defrost setting.
4. **Check your lights.** Use your headlights so that others will see you and, we hope, not pull out in front of you. Make sure your headlights and taillights are clear of snow. If you have an older car with sand-pitted headlights, get a new set of lenses. To prevent future pitting, cover the new lens with a clear tape like that used to protect the leading edge of helicopter rotor blades and racecar wings. It's available from auto-racing supply sites.
5. **Give yourself a brake.** Learn how to get maximum efficiency from your brakes before an emergency. It's easy to properly use antilock brakes: Stomp, stay and steer. Stomp on the pedal as if you were trying to snap it off. Stay hard on the pedal. Steer around the obstacle. (A warning: A little bit of steering goes a very long way in an emergency. See Tip 8.) If you drive on icy roads or roads that are covered with snow, modify your ABS technique: After you "Stomp" and the ABS begins cycling — you will feel pulses in the pedal or hear the system working — ease up slightly on the pedal until the pulsing happens only once a second.

For vehicles without ABS, you'll have to rely on the old-fashioned system: You. For non-ABS on a mixed-surface road, push the brake pedal hard until the wheels stop rolling, then immediately release the brake enough to allow the wheels to begin turning again. Repeat this sequence rapidly. This is *not* the same as "pumping the brake." Your goal is to have the tires producing maximum grip regardless of whether the surface is snow, ice or damp pavement.

6. **Watch carefully for "black ice."** If the road looks slick, it probably is. This is especially true with one of winter's worst hazards: "black ice." Also called "glare ice," this is nearly transparent ice that often looks like a harmless puddle or is overlooked entirely. Test the traction with a smooth brake application or slight turn of the wheel.
7. **Remember the tough spots.** Race drivers must memorize the nuances of every track, so they can alter their path for changing track conditions. You must remember where icy roads tend to occur. Bridges and intersections are common places. Also: wherever water runs across the road.
8. **Too much steering is bad.** If a slick section in a turn causes your front tires to lose grip, the common — but incorrect — reaction is to continue turning the steering wheel. That's like writing checks on an overdrawn account: It won't improve the situation and may make things worse. If the icy conditions end and the front tires regain grip, your car will dart whichever way the wheels are pointed. That may be into oncoming traffic or a telephone pole. Something very similar happens if you steer too much while braking with ABS.
9. **Avoid rear-tire slides.** First, choose a car with electronic stability control. Fortunately, ESC will be mandatory on all 2012 models. Next, make sure your rear tires have at least as much tread as your front tires. Finally, if you buy winter tires, get four.
10. **Technology offers no miracles.** All-wheel drive and electronic stability control can get you into trouble by offering a false sense of security. AWD can only help a vehicle accelerate or keep moving: It can't help you go around a snow-covered turn, much less stop at an icy intersection. ESC can prevent a spinout, but it can't clear ice from the roads or give your tires more traction. Don't let these lull you into overestimating the available traction.

Sandy

**4-day Lodore Canyon with a group  
from the CV Ski Club & Friends  
AUG. 5-8TH, 2011  
Price: \$525**

Sorry, Camping gear is not included in this discounted price.

This is not a sanctioned "CVSC" Trip. You will need to make your own reservations. You are also responsible for getting there and back. Vernal is about 3 to 3 1/2 hours, 175 miles, from Salt Lake City. We will be spending the night in a local hotel. Will let you know where, so we can all meet up, or we will meet you at 7am in the morning the day the raft trip starts. There is a max of 25 spots available.

This is a four day Rafting Adventure on the Green River in Dinosaur National Monument go to [www.bikeraft.com](http://www.bikeraft.com) or call 800-624-6323 and talk with Karen Johnson with Holiday River Expeditions. Let her know that you're with friends from the Castro Valley Ski Club. Tucker & I and some others (17 right now) are going on Aug. 5-9th, 2011. We could not make the July 7-10 date, which is still available if you prefer to go then. They take credit cards. For lots more info look at the web site below.

The deposit amount is \$300.00 per person to confirm and the final balance will be due 45 days before the trip.

Holiday Expeditions  
[www.bikeraft.com](http://www.bikeraft.com)  
[www.twitter.com/bikeraft](http://www.twitter.com/bikeraft)  
800-624-6323





Castro Valley Ski Club *presents*

ASPEN  SNOWMASS.

## SNOWMASS, COLORADO

January 21-28, 2012

**\$925**

Price does NOT include air or ground transportation.

### Package Includes:

- 7 Nights Lodging - Top of the Village Condos - 2bd/2bath
- 5-Day Lift Ticket - good at all 4 mountains  
Aspen, Snowmass, Aspen Highlands & Buttermilk
- Porter Fee
- All Taxes
- Maid Service - 2 days a week
- CV Party and more.....



Ski-in, ski-out lodging in deluxe two bedroom condominiums.

Accommodations include, private covered parking, washer/dryer and gas grille in every condo, outdoor heated pool, two hot tubs, sauna, exercise room. Complimentary TOV shuttle transportation throughout Snowmass Village during hours of operations.

Send a \$200 deposit made out to CVSC to:

Pat Green c/o Tucker Hoffmann  
2657 Rivers Bend Circle, Livermore 94550  
925-846-7250 [greendm@comcast.net](mailto:greendm@comcast.net)

please e-mail Pat that you have sent money, only 40 spots available

Cancellation penalties will apply  
must be a member of the Castro Valley Ski Club

CVSC CST # 2081040



## **2010/2011 Avid Skiers in Control**

|                   |                   |              |                              |
|-------------------|-------------------|--------------|------------------------------|
| President         | Karen Wehrman     | 510-538-2872 | kwehrman@comcast.net         |
| Vice President    | Ron White         | 925-443-3106 | ronkewhite@gmail.com         |
| VP Membership     | Dave Silva        | 510-538-2322 | silvadave@yahoo.com          |
| VP Weekend Trips  | Jim Silva         | 510-538-2872 | kwehrman@comcast.net         |
| Secretary         | Eva Lanphear      | 510-793-3863 | ejlanphe@pacbell.net         |
| Treasurer         | Claudia Fernandes | 925-462-6573 | Claudia.fernandes@jud.ca.gov |
| Newsletter Editor | Dennie Warren     | 510 759-3415 | dennieluuu1@att.net          |
| Web Manager       | Rindie Chase      | 925 447-3659 | clarinett@comcast.net        |
| Race Director     | Dave Cunningham   | 925 455-1333 | tahoeskier@mail.com          |
| Activity Director | Pat Green         | 925 846-7250 | greendm@comcast.net          |
| Travel Director   | Tucker Hoffmann   | 925-371-1910 | tkhoffmann@aol.com           |
| Past President    | Ralph Sherman     | 925-449-7941 | shermscape47@yahoo.com       |
| Trustee           | Kathy Hoffman     | 925-371-1910 | tkhoffmann@aol.com           |
| Trustee           | Jim Korn          | 510-357-6127 | jimkorn@sbcglobal.net        |
| Safety Chair      | Sandy Beecher     | 707-255-4139 | srbeecher@aol.com            |

WEBSITE: [www.cvskiclub.org](http://www.cvskiclub.org)

## **WEBSITES & PHONE NUMBERS**

Singles league racing:

[slracing.tripos.com/schedule.htm](http://slracing.tripos.com/schedule.htm)

Open league racing: [olrc.org](http://olrc.org)

Weather: [nws.mbay.net/home.html](http://nws.mbay.net/home.html)

Far West Racing Assoc: [fwra.com](http://fwra.com)

Web cams on the slopes: [magnifeye.com](http://magnifeye.com)

Road conditions: 1-800-427-7623

Info on all ski areas: [onthesnow.com](http://onthesnow.com)

Take a bus to the slopes: [nacski.com](http://nacski.com) & [bayareaskibus.com](http://bayareaskibus.com)

Sierra webcam: [sierravisionsstock.com:80/sierravisions/sierra-nevada-webcams/](http://sierravisionsstock.com:80/sierravisions/sierra-nevada-webcams/)

## ***SKIZETTE FOR MARCH, 2011***



The next meeting will be  
March 2

Don Jose's Restaurant  
3430 Village Dr  
Castro Valley, CA  
(meetings start at 7:30 pm)

**SKI WITH PRIDE, LET IT RIDE, WATCH ALL SIDES**  
*First With Safety Awareness Slogan award sponsored by:*



**ASPEN & SNOWMASS**